

Education Design

W W A

WEST WADDY ARCHADIA



CONTENTS

Education Design at WWA Studios	3
Space Utilisation	4
Site Strategies & Masterplanning	5
Oxford Brookes University	6
University of Gloucestershire	8
Lord Wandsworth College: Science Centre	10
Abingdon Prep	12
EF Academy: Pullens Lane	14
Lord Wandsworth: Headmaster's House	16
Our Lady's School	18
EF Academy: Roborough House	20
Surrey SEN School	22
All Souls College: Heritage Services	24
Meet Our Expert Team	26

EDUCATION DESIGN AT WWA STUDIOS

Our experienced team at WWA Studios have a significant track record in the educational sector from university and college masterplans to space audits, planned maintenance strategies, the design and project management of new buildings and facilities plus alterations and extensions to primary and secondary schools. WWA also work within the Special Educational Needs sector.

The educational offer of clients is constantly evolving to meet the changing requirements of students and staff. Adapting old or creating new space is challenging not least because the physical work cannot disrupt the day-to-day functioning of the organisation.

We understand the often competing pressures on teaching and support facilities and our experience in analysing actual rather than theoretical space utilisation enables us to advise clients effectively.

Our integrated town planning and architectural teams give our consultancy offer a broader scope, advising upon the strategic development of assets, assessing planning opportunities at both macro and micro level and delivering right down to the fine details that make a difference to the student/pupil experience.

SPACE UTILISATION

We understand that space is expensive. Increasing student numbers, changes in curriculum or intensification of corporate functions can lead to difficulties with timetabling and a perceived demand for more space.

The answer in our experience is to interrogate thoroughly the utilisation of space in an objective manner. Sometimes a few strategic changes can achieve much improved utilisation of existing facilities and avoid the need to invest in additional and expensive new construction.

WWA Studios have acted for many colleges, schools and other organisations undertaking space utilisation studies to ascertain efficiency in use of existing space and built assets.

These studies are used to underpin later masterplanning work that aims to firstly identify strategic and low cost 'easy win' interventions which can feed into a longer-term strategic vision, which may involve significant new construction and/or alteration and extension works.

Educational clients for whom we have acted in this capacity include:

- › Corpus Christi College, Oxford
- › Oxford Brookes University
- › Lord Wandsworth College
- › Hampshire Ruskin College, Oxford
- › Abingdon School
- › Headington School, Oxford
- › EF International (Oxford and Eastbourne)



Above Image: Corpus Christi College Space Audit

SITE STRATEGIES & MASTERPLANNING

Having worked with a range of providers we understand that the strategic development of land and estates is challenging in the educational sector and is often characterised by decades of ad hoc development with no strategic vision or 'masterplan'.

Drawing on our experience of site analysis and masterplanning, WWA Studios advise clients on the best way to maximise their long-term interests. Our integrated town planning and architectural teams work with our clients and their stakeholders to appraise different options and build a rationale for sensitive and sound investment.

Ultimately a masterplan should create a clear vision for the future planning and development of the campus or school estate. By looking and planning ahead, expensive mistakes can be avoided such as locating immediate development needs in locations that could block a longer-term opportunity.

Having a masterplan approved by the local planning authority smooths the way for future phases of development through a faster and more secure planning process. This can be achieved through the Local Plan process, outline planning consent or even an informal memorandum of understanding with the planning authority.



Above Image: Campus Masterplan, Oxford Brookes University.



I would like to record my appreciation of the hard work and commitment that you and your colleagues have put into this.

Deputy Vice-Chancellor and Registrar of Oxford Brookes University.

As part of a Framework Agreement with Oxford Brookes University, WWA developed a £110m Masterplan for the University's Headington, Wheatley and Harcourt Hill Campuses.

The Masterplan sets the parameters that enabled the University to implement its vision over a 15-year period. Working closely with other consultants, the Practice was responsible for all planning advice associated with the University's ambitious plans.

Our commission included completing a Sustainability Appraisal and we also advised upon the form and level of consultation associated with the Masterplan as well as producing a consultation report consolidating all stakeholder involvement. The Sustainability Appraisal involved project managing and co-ordinating nine other consultants.

The University's three campuses are located within different local planning authority districts and co-ordinating the Masterplan between Councils with different planning policies proved particularly challenging.

The Masterplan for the Headington Campus was endorsed by Oxford City Council and paved the way for subsequent individual planning applications prepared by WWA for various phases of work in implementing development.

Key to the Masterplan was the re-orientation of the main approach to the campus which now faces the London

Road, linking more successfully with the adjacent Headington Hill Hall facilities and creating a strong visual identity and sense of place.

WWA Studios received an RTPI Planning Excellence award for our masterplan vision that transformed the campus at Oxford Brookes.



Above Image: John Henry Brookes Lecture Theatre, Oxford Brookes University.
Main Image: Headington Library, Oxford Brookes University.



UNIVERSITY OF GLOUCESTERSHIRE

Gloucestershire

The team at WWA Studios have considerable experience working with universities and colleges in developing plans for significant redevelopment and expansion.

Acting for the University of Gloucestershire, WWA achieved planning consent for the re-development of the Oxstalls Campus, which was critical to the University's long-term growth and investment plans. The Campus, which is home to 'The Growth Hub' has become the new base for the University's Business School. Our masterplan enabled the Business School to relocate from the Park Campus in Cheltenham, bringing business, education and economic development under one roof. This project represents the benefits of the holistic service on offer at WWA Studios to our larger educational clients.



Above Image: Campus Masterplan, University of Gloucestershire.
Main Image: New Business School, University of Gloucestershire.



LORD WANDSWORTH COLLEGE: SCIENCE CENTRE

Long Sutton, Hampshire

Forming part of a WWA Studios masterplan to update and expand facilities at Lord Wandsworth College in Hampshire, the practice was appointed to design and deliver this £6.2M science facility comprising 13 state of the art science laboratories, a faculty room and conference facility. The building was conceived as a steel framed structure with internal layouts developed in close consultation with the Head of Science and senior team at LWC. Externally we devised two alternative elevational treatments, a largely brick built façade with traditional window openings and an alternative more contemporary option incorporating zinc cladding and with glazed atria at either end of the building. The Governing body unanimously approved the contemporary design approach considering it to be more reflective of the future aspirations of the College.

The new facility is placed at the east end of a pedestrianised 'street' which runs through the central part of the school campus and acts as a focal point when looking eastwards. The 'street' extends into and through the building with a wide central circulation spine running the full length of the building and with areas of double height atria linking ground and first floors together.

Each science laboratory has teaching space for 24 pupils plus staff in a configuration of 4 laboratories per science discipline and with a 13th junior science lab in addition. Prep rooms are located centrally within each group of labs with separate access permitting technicians to service the laboratories before and if necessary, during lessons without disrupting teaching.

This traditionally procured building, designed and project managed by WWA, finished within budget and has been very well received by parents, staff and pupils alike.



Above Image: Science Laboratory at Lord Wandsworth College.
Main Image: Entrance to the new Science Centre at Lord Wandsworth College.



ABINGDON PREP

Abingdon-upon-Thames, Oxfordshire

WWA were appointed by Abingdon Preparatory School to analyse the suitability of existing teaching and support accommodation at the school and develop a strategy to resolve operational challenges of the site. The school is located within a Grade 2 listed building which has been extended and remodelled on an ad-hoc basis over many decades.

Our study identified a lack of space to properly deliver key areas of the curriculum and a lack of coherence in the spatial arrangement of the school resulting from years of piecemeal development. This is often typical of schools and colleges where no long-term vision or 'masterplan' for future development has been conceived.

The focus of our masterplan was not about increasing the capacity of the school in terms of pupil numbers, but rather to ensure the school has the buildings and facilities needed to deliver its vision and compete effectively in the marketplace.

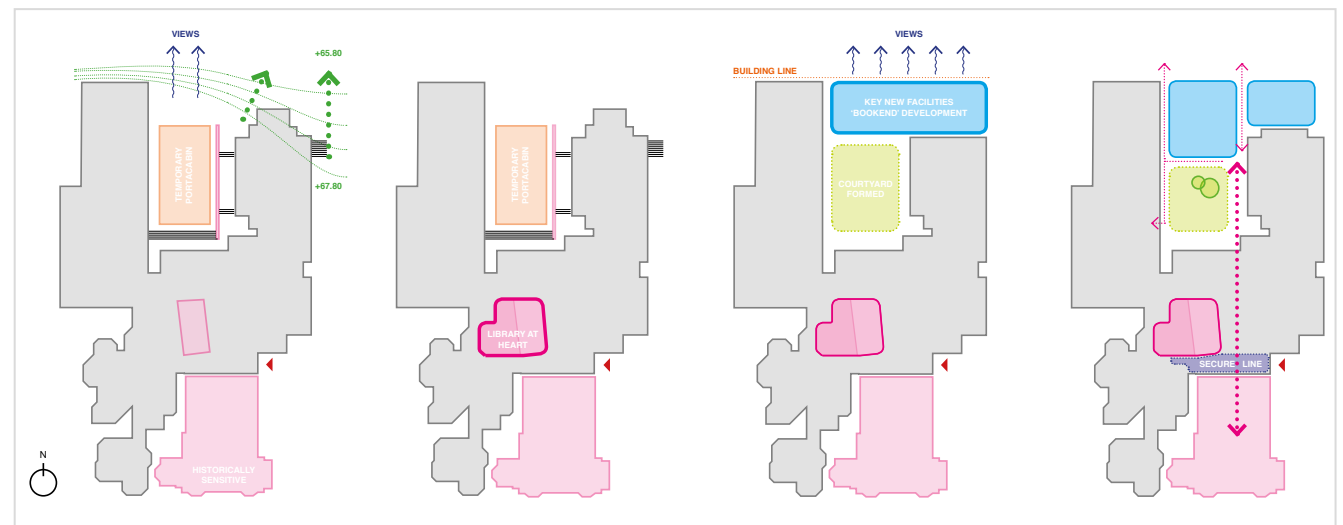
Having devised a strategy for rationalising the school's facilities, it was then possible to develop a brief for the design of additional accommodation necessary to modernise and deliver the school's long-term vision.

Upon completion of the masterplan, WWA Studios were then engaged to deliver the proposed improvements at the school which included internal re-ordering of space and the creation of new built facilities.

Given the sensitivities of the heritage asset and its semi-rural setting, our town planning and conservation team worked diligently to secure planning and listed building consent for significant alteration and extension works at the school.

The project includes the following new elements: construction of a new music department, CDT and IT facilities, and the provision of new classrooms to provide a permanent replacement for temporary classrooms currently in use at the school.

The accommodation also enables reorganisation of existing facilities, creating a more efficient and practical organisation of the school's layout with a large library at its heart, acting as a shared resource for pupils of all ages.



Above Image: Courtyard & extension of Abingdon Prep School.



EF ACADEMY: PULLENS LANE

Oxford

The ISIS building is the third and final stage of a £6M masterplan delivered by WWA Studios for EF International.

The campus on Pullens Lane, Oxford provides facilities for several hundred students to learn English and study A Levels whilst undertaking varied extracurricular activities.

Openness and light are themes that underpin the design and layout of the scheme with vistas through and between the buildings linking dining, reception, teaching and residential spaces together. EF International are established in nearly 500 locations spread across 50 countries and shortly after completion, students and staff voted the new facilities designed by WWA Studios as 'EF International School of the Year'.

As with many of our educational projects, this commission began with a Masterplan which was endorsed via a Design Review process managed by the City Council. It led the way to a relatively seamless series of planning and conservation area consents for the three phases of development designed and project managed by WWA Studios.

The ISIS building is the third and final stage of the redevelopment. It was nominated for a RIBA South Award and the Oxford Preservation Trust also awarded the building a Design Commendation shortly after completion. The judges specifically "praised the architectural coherence of design that the school has brought to the site formerly occupied by Plater College. The glazed facade to the entrance works particularly well and positively invites you to pass over the threshold".

For a video tour of the completed facilities see:

www.ef.co.uk/ilsd/schools/oxford



Above Image: Exterior of the entrance to EF Academy, Pullens Lane.
Main Image: Interior of the primary staircase within the Academy.



First Floor
Classrooms 201-225
Quiet Study Room 207
Lab 1
Lab 2

Ground Floor
Choir
Main School Shop
School B

UM O
A

LORD WANDSWORTH: HEADMASTER'S HOUSE

Long Sutton, Hampshire

As part of wider masterplan developments at the Lord Wandsworth College, WWA Studios were appointed for full architectural services (RIBA workstages 1-6) for the design and construction of a new Headmaster's house. Nearby buildings on site are predominantly red brick designed and built in the Arts and Crafts style.

The detailing of this new dwelling reflects the vernacular style of its surroundings. Diapering to the chimney columns and stone detailing to door and window surrounds are amongst the details that give this house it's status and presence.

Whilst traditional in appearance, the building is designed to perform to very high standards of energy conservation with a highly insulated perimeter fabric and features underfloor heating giving modern comfort in a traditional setting.



Right Image: Front elevation of the Headmaster's House.
Main Image: Rear of the Headmaster's House.



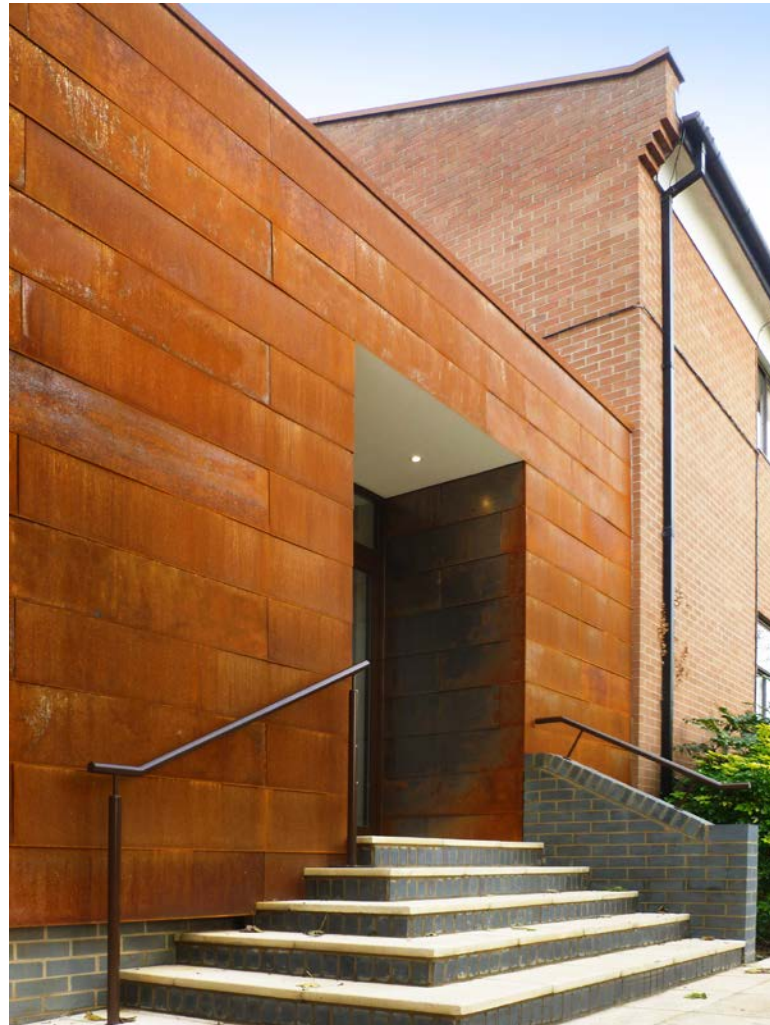
OUR LADY'S SCHOOL

Abingdon

The challenge of extending an existing teaching space to create a new Design and Technology suite was met by reflecting the function of the building in its external cladding. Using Corten self-rusting steel as a cladding material for the bespoke design, WWA Studios created two large workshop spaces for woodwork, metalwork and CAD studies. Specific placement of tools and machinery govern the size and location of narrow windows which puncture the Corten box.

The terracotta tones of the exterior panels provide a contemporary addition, whilst complementing the traditional sandy – red brick of the original building.

The new facilities offer technology students the chance to hone their design skills in a purpose-built facility which exhibits the varied applications and properties of steel and the manner in which oxidation can help preserve a material and prevent continuing decay.



Above Image: Materiality.
Main Image: Main facade and materiality.



EF ACADEMY: ROBOROUGH HOUSE

Eastbourne

Originally a Victorian preparatory school, later converted to a hospital, this idiosyncratic building has been completely refurbished and modernised as part of a £6.5M phased masterplan to create a new International Study Centre.

Our brief was to advise upon the most cost-effective conversion and extension option to maximise the value of the site whilst meeting the stringent planning policies of the local authority. The masterplan for Roborough House focused upon a central axis approach and allowed for the sensible phasing of the project to ensure each part of the development could be occupied prior to the completion of the project as a whole.

The first phase of development provides 22 teaching rooms alongside catering and recreational facilities in an elegantly restored historic building. The focal point is the grand entrance and reception with traditional panelling and decorative plaster ceilings, giving a contemporary makeover with modern lighting and furnishings.

Our second phase creates 92 new study bedrooms in a three-storey contemporary wing that links back to the main house whilst Phase 3 completes the masterplan with a lecture theatre and a glazed dining and social space. The completed masterplan combines contemporary design with the existing traditional Victorian building in a contrast of styles designed specifically to enhance the quality of development.

This extensive scheme met with the full approval of Eastbourne Council who enthusiastically approved the development application.

It is only through careful consideration of at times competing requirements for budgetary control, design excellence, fast track delivery and operational efficiency that a holistic scheme can be delivered. At Roborough House the project was delivered on time and on budget.

For a video tour of the completed facilities see:
www.ef.co.uk/ilsd/schools/eastbourne



Above Image: Interior of the new catering facilities.
Main Image: Principal elevation, Roborough House.



SURREY SEN SCHOOL

Long Ditton, Surrey

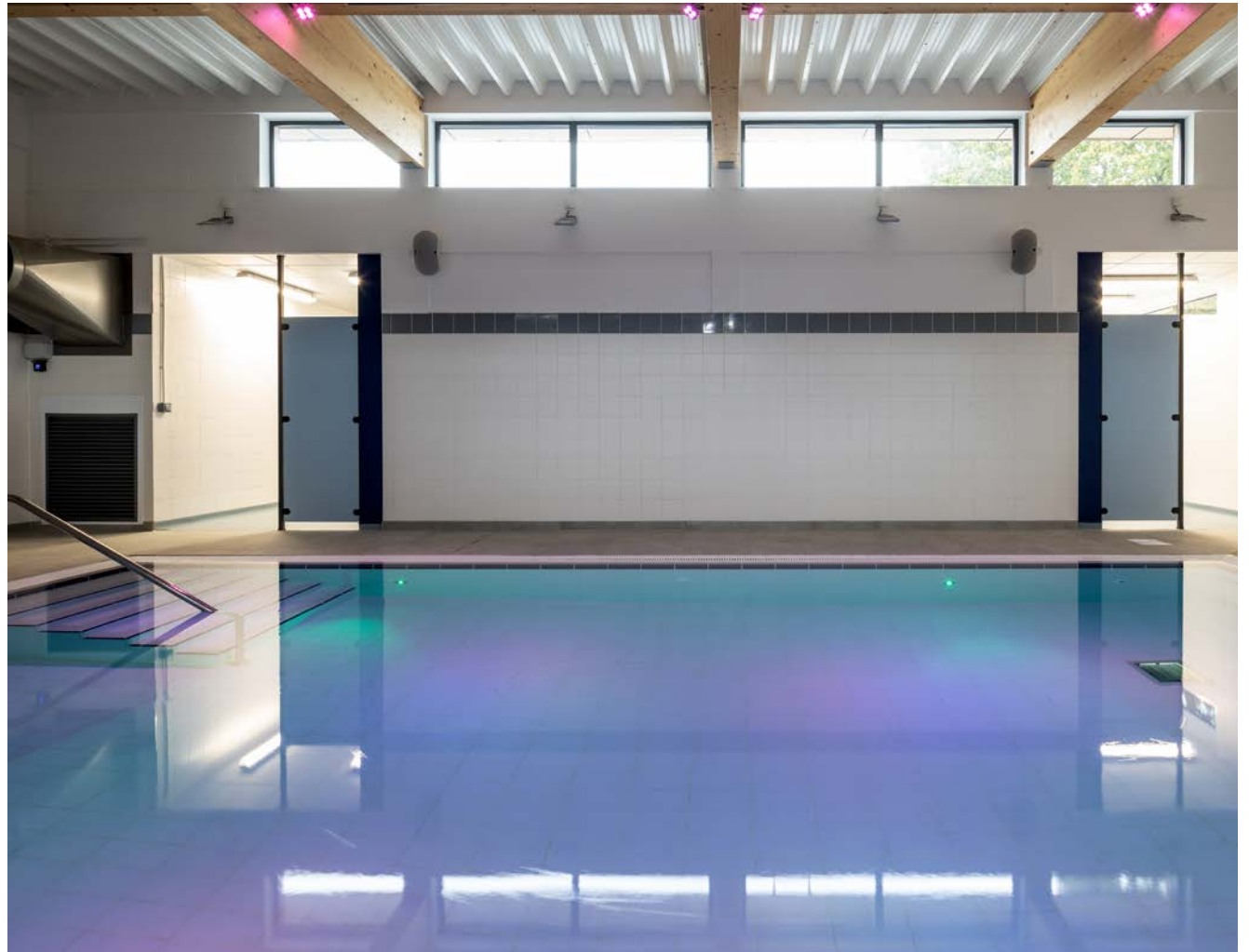
A group of Edwardian buildings in the Surrey Green Belt, previously used as a training and conference centre, was acquired by a Special Educational Needs School. WWA were commissioned to design and deliver a 'whole site' masterplan exercise to convert the complex into a new facility for children with severe learning difficulties.

A carefully designed programme of works followed our masterplan involving remodelling, refurbishment and new build elements.

The final phase of the masterplan was the building of a hydrotherapy pool and activity room to provide an indoor active therapy facility at the site in Surrey.

The simple interior and exterior are designed to provide a calming atmosphere for pupils with autism. The use of natural materials such as red brick and two contrasting tones of timber effect boarding have been influenced by the woodland setting, helping to nestle the building into its context. An undulating feature wall weaves between a colonnaded frontage creating bays for outdoor seating.

This project demonstrates our knowledge, understanding and empathy in designing for those with special education needs.



Above Image: Hydrotherapy Pool.
Main Image: Entrance Canopy.



ALL SOULS COLLEGE: HERITAGE SERVICES

Oxford

Under the direction of accredited conservation architect Philip Waddy, WWA has been appointed on a series of conservation led projects for All Souls College Oxford over the past 12 years. Starting with an energy audit of the 1438 front quad, we examined options for reducing energy consumption and carbon emissions from this medieval Grade I listed building. Significant data gathering and testing of the structures was undertaken before specifying improvements to thermal efficiency and air tightness. Overall energy savings of up to 40% have been achieved equivalent to a saving of 70 tonnes of CO2 annually.

Subsequent works for the College include a series of stone conservation and restoration works to the south and west public facades and to the internal kitchen quad elevations. Specialist cleaning techniques and replacement stone have combined to transform the appearance of the building achieving an Oxford Preservation Trust Public Realm Conservation Award.

Other projects at All Souls include the complete remodelling and fit out of the Porters Lodge and College kitchens. Our work at All Souls reflects the long tradition of conservation projects undertaken by WWA within many sectors including Education.



Above Images: Repairs and restoration being undertaken of heritage structures.
Main Image: High Street elevation of All Souls College.



MEET OUR EXPERT TEAM

WWA Studios has a rich heritage stretching back over 137 years.

WWA is an innovative multi-disciplinary practice of Architects, Urban Designers and Town Planners with a pedigree of successful educational projects delivered over our long history. We offer outstanding client focussed services embracing the crossover all between built environment disciplines and we consistently deliver high quality projects on time and on budget.

Our team of town planners offer added value to clients with an exceptional success rate in achieving planning consent.

Find out more about our team and the outstanding projects they deliver via our website and social media.



@wwa_studios



wwa-studios.com





OXFORD STUDIO

THE MALTHOUSE
60 EAST ST. HELEN STREET
ABINGDON, OXFORD
OX14 5EB

0123 552 3139
OXFORD@WWA-STUDIOS.COM

LONDON STUDIO

ASHLEY HOUSE
58-60 ASHLEY ROAD
HAMPTON
TW12 2HU

0208 941 5161
LONDON@WWA-STUDIOS.COM

