

# WELCOME TO THE EXHIBITION

The Disabilities Trust are working in partnership with the Hertfordshire and West Essex Integrated Care Board to design and transform the Nightingale Care Home into a state-of-the-art residence for people they support.

The building will be turned into a fully assisted residence and will enable people to enjoy more independence and we hope better well-being through an innovative service. The home will provide rehabilitation and include bedrooms and self-contained living spaces.

West Waddy Archadia have been developing the design with the majority of works occurring internally to the building. There are minor alterations to the external elevations, however the visual appearance from the outside will not substantially alter. In addition to the works to the building there will be hard and soft landscaping works to enhance the external areas.

The following boards explain the current site's proposed design and key design considerations. Please take your time to look at the information on the design and we welcome any feedback that you can provide.

## DESIGN AIMS

Our aim is to deliver a 16 person residence. The homes will be predominantly accessible bedrooms with en-suites with two self-contained apartment style homes to provide step down accommodation on site. There will also be communal rooms providing rehabilitation and relaxation. The apartments and communal rooms will be designed to a high standard in a psychologically informed manner.

Key features include:

- Comfortable and welcoming reception area
- Sensory room
- High quality housing for people with needs
- OT Kitchen / Learning Space
- Dining Room is located in close proximity with lounge



Location Plan



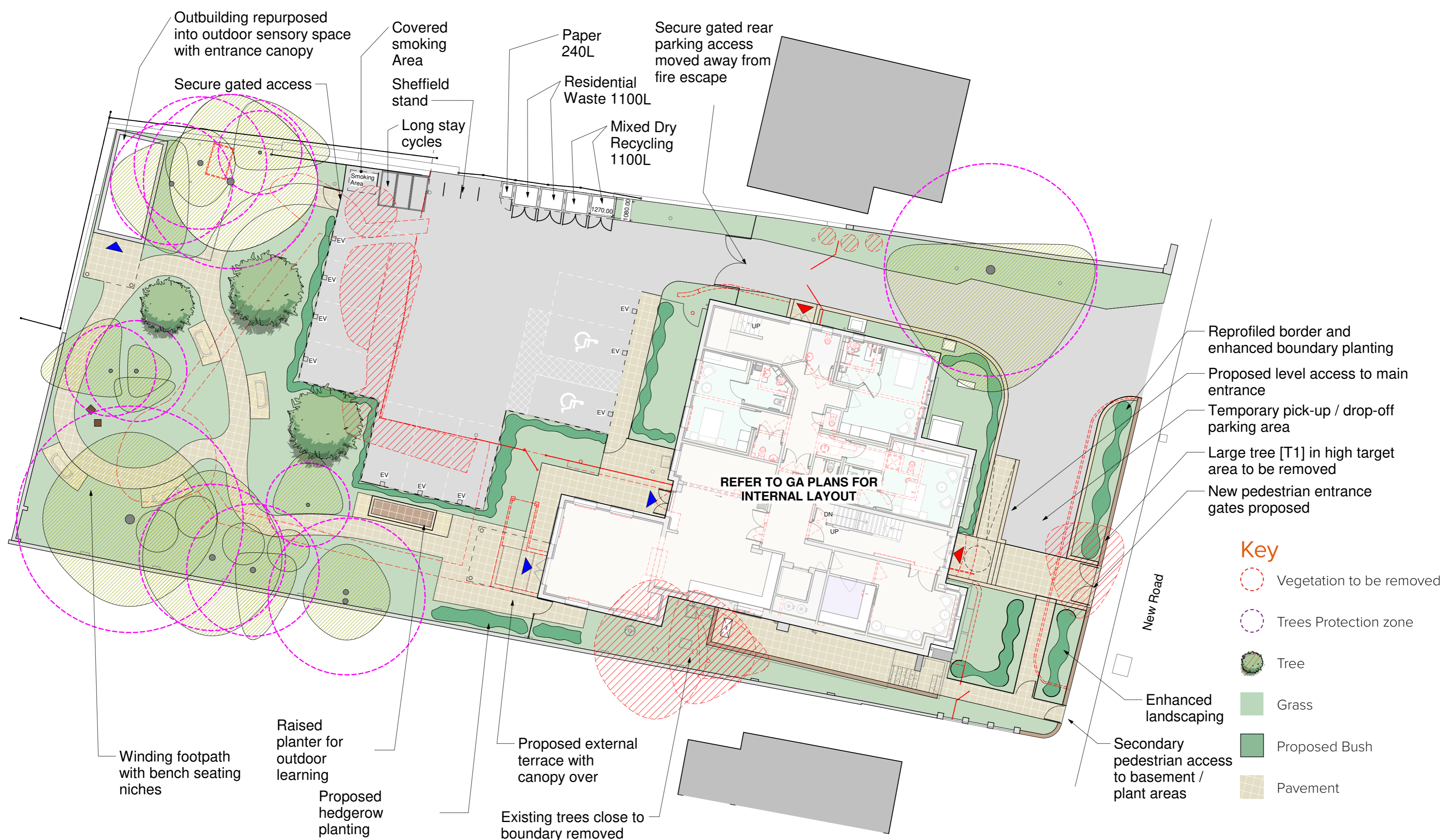
View From New Road



Rear of Property



View over Garden



Proposed Site Plan

We welcome your comments, please visit:

[wwa-studios.com/nightingalecarehomeconsultation](http://wwa-studios.com/nightingalecarehomeconsultation)



WEST WADDY ARCHADIA